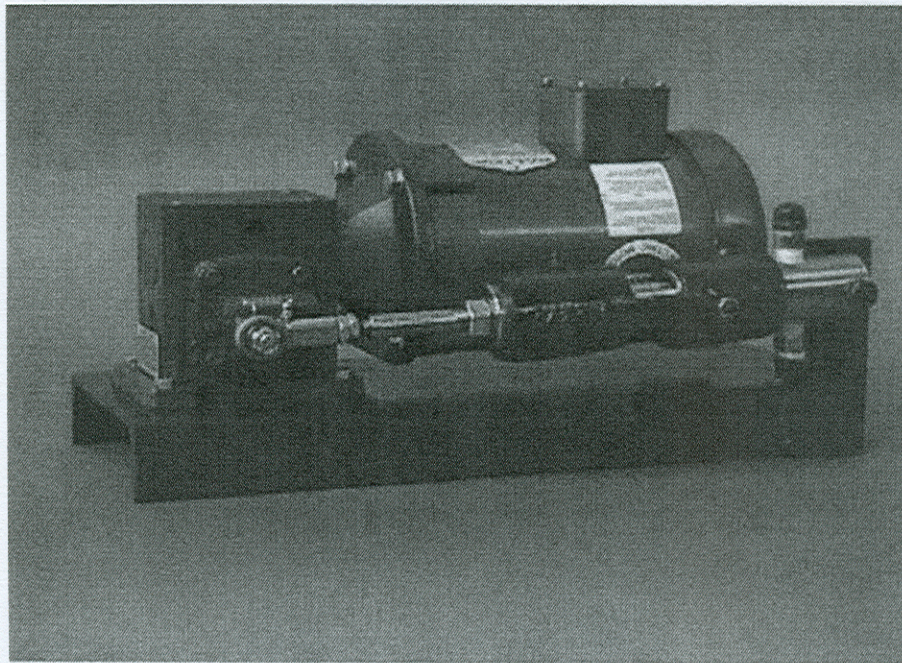
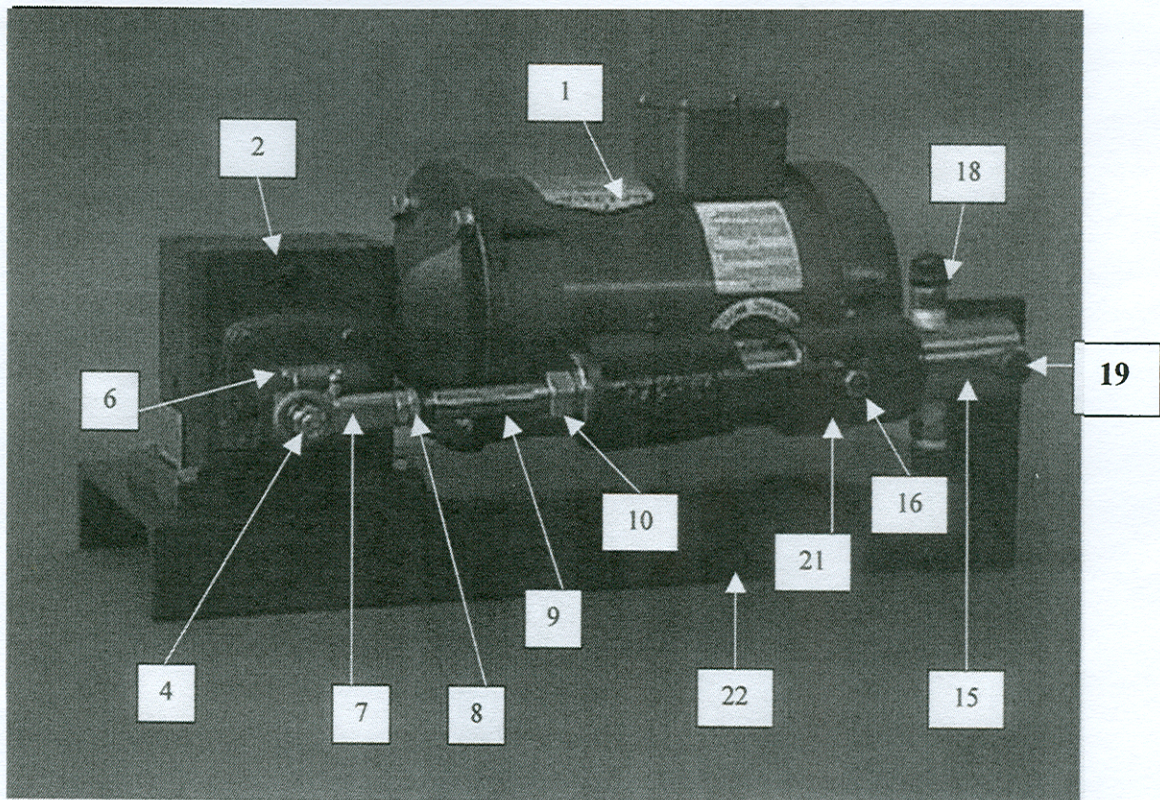


INJECT-O-METER
OPERATING INSTRUCTIONS
YOU HAVE PURCHASED MODEL:
IOM 3 - 30



INJECT-O-METER MFG. CO., INC.
820 THORNTON STREET
CLOVIS, NM 88101
TEL: (800) 545-4440
E-MAIL: sales@inject-o-meter.com
WEBSITE: www.inject-o-meter.com



MODEL: IOM 3 – 30

PARTS BREAKDOWN

REF #	PART #	QTY	DESCRIPTION
1	044-003	1	MOTOR C-FACE 1/3HP, 3 Phase
1	044-004	1	Motor C Face 1/3 HP, 1 Phase
2	029-131	1	GEAR REDUCER
3	043-028	4	CAPSCREW HEX HEAD <i>(Not Shown)</i>
4	021-101	4	NUT HEX
5	043-081	4	LOCKWASHER <i>(Not Shown)</i>
6	029-012	1	ECCENTRIC ASSEMBLY COMPLETE
7	021-044	1	ECCENTRIC BEARING
8	043-072	2	NUT HEX JAM
9	029-125	1	CONNECTING ROD IOM 3-30
10	043-070	1	NUT HEX
11	029-126	1	CROSSHEAD IOM 3 – 30 <i>(Not Shown)</i>
12	021-103	1	PISTON RETAINING SCREW <i>(Not Shown)</i>
13	021-099	1	LOCKWASHER <i>(Not Shown)</i>
14	029-129	1	PISTON 1.25 IOM 3 – 30 <i>(Not Shown)</i>
15	029-128	1	CYLINDER 1.25 IOM 3 – 30
16	043-112	2	SETSCREW SOCKET
17	043-067	2	NUT HEX <i>(Not Shown)</i>
18	021-285	2	PUMP VALVE ASSY NEW STYLE
19	029-137	1	SHOULDER BOLT With Grease Fitting
21	029-127	1	PUMP FRAME IOM 3 – 30
22	029-130	1	BASE PLATE IOM 3 – 30
N/A	029-136	1	O'Ring Viton Big <i>(Not Shown)</i>
N/A	029-135	1	U-Cup Buna <i>(Not Shown)</i>
N/A	055-071	1	O'Ring Viton Little <i>(Not Shown)</i>

• **CAUTION** •

READ INSTRUCTIONS BEFORE OPERATING UNIT

INJECT-O-METER Pumping and Mixing Equipment is designed to handle most, but not all, types of Ag chemicals and fertilizers that are to be injected into irrigation systems. Due to the complexity of today's chemical formulations, it is impossible to incorporate into a piece of equipment, standard fittings and components that will stand up against *all* types of Ag Chemicals and Fertilizers that may be used.

WARNING; TO PREVENT SERIOUS INJURIES AND OR DEATH READ ALL INSTRUCTIONS

INJECT-O-METER MFG. CO., INC. will not be held liable for injury or damages of any kind, direct, consequential, or contingent, to persons or property from the use of its equipment. Furthermore, our warranty does not extend to loss of crops, loss of chemical, losses caused by delays or any other expense or loss of labor, supplies, rental machinery, prospective profits, or any other reason. ***THERE ARE NO WARRANTIES, WHICH EXTEND BEYOND THE DESCRIPTION PROVIDED HEREWITH.***

IMPORTANT NOTICE:

EPA Label Improvement Program (PR Notice 87-1)
For Pesticides Applied through Irrigation Systems (CHEMIGATION).

The user of this equipment or any other product manufactured or sold by **INJECT-O-METER MFG. CO., INC.** assumes the responsibility for its use and proper installation. **(Installation and use that does not conform to PR Notice 87-1 is done so at the discretion of the user and INJECT-O-METER WILL NOT BE HELD LIABLE.)**

**FOR FURTHER INFORMATION REGARDING USE OF THIS EQUIPMENT
CALL OR CONTACT:**

INJECT-O-METER MFG. CO., INC.
820 Thornton Street Clovis, NM 88101 U.S.A.
Tel: (505) 763-4461 Fax: (505) 762-2497
Toll Free: 1-800-545-4440

Instructions to rotate the Motor & Gearbox

On the motor fan cover there is a plastic cap in the center of the fan cover. MAKE SURE THE PUMP IS NOT RUNNING. Please remove the cap.

Inside the fan cover hole you will see a straight slot on the end of the motor shaft. You can use a flat head screwdriver and turn the motor shaft either direction to turn the eccentric on the pump to your desired position for easier adjustment.

INSTALLATION OF THE INJECTION SYSTEM

*****INSTALLATION KIT NOT INCLUDED WITH THE IOM 3-30*****

1. Connect suction hose to bottom valve and fittings. Make sure suction hose has a Filter to prevent contamination.
2. Connect discharge hose to top valve and fittings. Make sure discharge hose is reinforced with a minimum rating of 250 psi.
3. Connect opposite end of discharge hose to waterline checkvalve.
4. Make sure all fittings and clamps are secure before starting pump.
5. Have a licensed electrician connect power to pump.

METERING ADJUSTMENT

Bearing Assembly does not need to be removed from T-bolt for metering adjustment.

NOTE: All pumps are fitted with a capacity scale, graduated from 0 – 10. This scale is located on the eccentric and represents at each incremental setting, the amount of liquid that can be pumped (GPH) at that particular setting. The scale relates to a percentage in GPH output based on the maximum output capabilities of the pump arm being used.

EXAMPLE:

1. Maximum pump output = 30 GPH @ setting of 10 (100%) on the scale.
2. Desired amount of liquid to be pumped is 15 GPH.
3. Scale pointer should be adjusted to a setting of “5” or 50% on the capacity scale.
4. “5” or 50% of 30 GPH = 15 GPH.

Once you have determined the maximum GPH output of any pump arm assembly, all settings or adjustments of the pointer on the capacity scale will indicate the percentage pumping capabilities of the pump as relates to maximum GPH capabilities.

METER ADJUSTMENT PROCEDURE

1. Disengage or stop pump.
2. Loosen locknut.
3. Turn allen head adjusting screw locating pointer in desired position on capacity scale.
4. Tighten locknut securely.

WARNING: Do not attempt to make capacity adjustments or changes without first loosening the eccentric locknut. Be sure locknut is securely tightened before resuming operation. **FAILURE TO DO THIS WILL CAUSE DAMAGE TO THE PUMP.**

SPEED REDUCER MAINTENANCE

MAINTENANCE

900 SERIES REDUCERS require no periodic maintenance. Visual inspection for leakage, accumulation of dirt, and general operating condition is recommended.

Accumulation of material on the reducer can lead to overheating and reduced life.

LUBRICATION

Oil changes are not required. Oil should only be replaced when maintenance is performed that requires disassembly. If the oil is replaced, use only Mobil SHC634. This oil has long life and is suitable for ambient temperatures as low as -10°F.

PUMP AND ECCENTRIC GREASE FITTINGS

The IOM330 has three grease fittings:

1. Eccentric Bearing
2. Pump Frame
3. Shoulder Bolt

Lubricate each grease fitting at least once daily on continuous operation with Mobil Lith AW2. In hot or dusty environments more frequent greasing will increase the life of the equipment. Grease the eccentric bearing until clean grease appears on the outside of the bearing area.

CAUTION – **DO NOT** attempt to grease eccentric bearing while pump is in operation!!!

IOM 3-30 SERIES PUMP CAPACITY CHART

POWER SUPPLY	MODEL IOM330	PISTON SIZE	1	2	3	4	5	6	7	8	9	10	
A – Electric		1 ¼	3.0	6.0	9.0	12.0	15.0	18.0	21.0	24.0	27.0	30.0	GAL/HR